



Rhode Island Public Works Association

November 2014

WWW.RIPWA.ORG

2014 Rhodeo Winners Sponsored to Attend National Rhodeo, Snow & Ice Conference



Photo courtesy of APWA

Jason Teolis and Mike Nally of Narragansett's DPW won this year's Snowplow Rhodeo. In prior years, the winners of the event would represent Rhode Island at the New England championships. This year, the RI Public Works Association sent the winning team to the national competition, which was held in conjunction with the APWA's Snow & Ice Conference in Loveland, CO from Sept. 24-26. See page 8 for details.

RIPWA
Now Accepting
Nominations
for the Board of
Directors

Please send letter
of interest to:
erin@ripwa.org
see pg. 12 for info

93 Small Fox Trail
West Kingston, RI 02892

We Put Safety First



CALENDAR OF EVENTS

November

- 11/5..... Intermediate Excel, Training Center, Warwick
- 11/5..... Chain Saw Skills & Safety, Scituate DPW
- 11/6..... Winter Operations, Training Center, Warwick
- 11/14..... Basic Computer Skills for Mechanics, Training Center, Warwick
- 11/17..... Wood Chipper Skills & Safety, Coventry DPW

February

2/4..... RIPWA Annual Indoor Expo see page 15 for details (snow date: 2/11)

For our full list of events and more info please visit www.ripwa.org/events and click on Full T2 Calendar

Classes available by request!
Please visit our website www.ripwa.org/training_request



Road Recycling Council
New England Region

Dick Martin
Pavement Recycling Specialist

P.O. Box 606, E. Taunton, MA 02718
Email: dmartin@roadrecycling.org
Website: www.roadrecycling.org

Cell: (857) 998-0119
Office: (508) 823-0903
Fax: (508) 823-4502



HIGHWAY REHAB. CORP.
2258 Route 22
Brewster, NY 10509
dave@highwayrehab.com

CELL: (508) 208-8487

Visit Our Website
www.highwayrehab.com

DAVID CAPELLE
CONSULTANT



Bacher Corp.

Providing sales and service of industrial and commercial mowing, turf, vegetation management and snow removal equipment for 35 years to Municipalities, State Agencies and Federal Government in CT, MA and RI.

We offer many other products including; Hustler Turf Equipment, Steiner, Pequea Trailers, Tanaka Power Equipment, MB-Co Multi Service Vehicle, AEBI Slope Mower, Rhino Ag Equipment, Giant Vac, Broyhill, York Rakes, and many more!



We are a full line Alamo dealer with a large inventory of parts available to be shipped the same day.

Our inventory includes obsolete parts that are no longer available from the manufacturer.

Contact your Bacher Corp. sales rep.
Lance Powell for more information!
7 Thompson Road PO Box 733
East Windsor, CT 06088
Office: 800-724-0635
Cell: 860-680-0130
LPowellBacher23@gmail.com
www.bachercorporation.com

TRAININGS & CLASSES

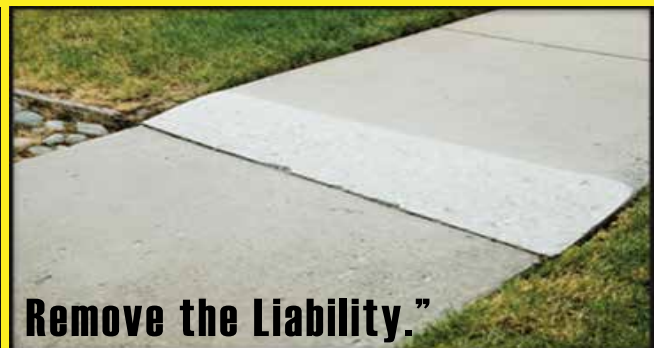
The Rhode Island Public Works Association is pleased to offer T2 Center classes and workshops at no cost to Rhode Island public works employees (as long as funding is available). If you would like to request training, please visit our website and fill out the training request form. Visit our website for details www.ripwa.org

Ideas for classes/training:

- Flagger Certification
- Hands On Chain Saw Skills & Safety
- OSHA 10 Hour Certification
- Bucket Truck Training
- Microsoft Office - Word - Level I & II
- Microsoft Office - Excel - Level I & II
- Preparing for the Hoisting Exam - Limited Loader Backhoe
- Preparing for the Hoisting Exam - Limited Crane
- Safe Driver Training Using the Truck Driver Simulator
- Time Management
- All About Asphalt Pavements
- Basic Computer Skills
- Basic Surveying and Layout Skills
- Diagnosing Vehicle Electrical Issues
- Tractor Mower Operations
- Winter Operations
- Wood Chipper Safety and Operations
- Work Zone Safety
- Leadership Skills



1 LAWSUIT COSTS MORE THAN FIXING ALL OF YOUR TRIP HAZARDS



Phone: (800) 553 0949

- **FAST & CLEAN**
- **PRECISE TRIP HAZARD REMOVAL**
- **LOW COST**
- **HIGH QUALITY**
- **ADA COMPLIANT**
- **PATENTED TECHNOLOGY**

www.safesidewalks.com



COMPLETE SHORING SOLUTIONS

from
Design
to
Delivery



American Shoring is the Leader in High Quality, Modular Trench Shoring

A complete line of heavy duty and light weight aluminum or steel trench shoring is available for all your needs.

Our staff is waiting for your call with professional advice to recommend the best specific product for your project.

Field service support and supervision available with on site assembly and take down.

Inquire about our Competent Person, Confined Space & OSHA 10 training classes.

All systems are manufactured in the USA.

AMERICAN SHORING INC.

207 Lake Street, Newburgh, NY 12550

1.800.407.4674

www.americanshoring.com

E-Mail us at

sales@americanshoring.com

In New England

American Shoring of Massachusetts, Inc.

**226 Cherry Street
Shrewsbury, Mass 01545**

508-842-2822

Fax: 508-842-2824

**SALES • RENTALS • SERVICE
REPAIRS • TRADE-INS
RECERTIFICATION**



MEMBER NEWS

NEWPORT



EXETER



Prepare for even cleaner streets! The town of Exeter has purchased a new Elgin Pelican road sweeper from our friends at C.N. Wood Co., Inc.

PLAYGROUND

Kids in Newport are smiling up a storm and preparing to use some serious energy. Newport's DPW crew have been hard at work, installing a playground at Freebody Park. It will be greatly appreciated by all ages!



RIDOT

The Rhode Island Department of Transportation has recently purchased eight pressure washers.

2014 EQUIPMENT SHOW & DEMONSTRATION



The 18th Annual RIPWA Equipment Show & Demonstration took place on Wednesday, September 10th at the Washington County Fairgrounds in Richmond, RI. Over 65 exhibitors displayed and over 500 people thoroughly enjoyed the Pig Roast that was catered by B & M Catering. Many left with great raffle prizes donated by the exhibitors and all said it was a successful day, with lots of training opportunities to take advantage of.



RIPWA is seeking a host community and location for the 2015 Equipment Show. Contact erin@ripwa.org



2014 SNOW PLOW & BACKHOE RHODEO



Photo's courtesy of URI T2 Center



Photo's courtesy of URI T2 Center

Just one of a few great training exercises, this year's Snow Plow Rhodoe, consisted of 12 teams, each made up of two drivers, who competed in three events:

- Safety Quiz
- Backing with a Compressor
- Plow Slalom

The results of the RI Snowplow Rhodoe Plow Slalom

- 1st - Jason Teolis & Mike Nally, Narragansett
- 2nd - Glenn Fraser & Kurtis Gaw, Seekonk
- 3rd - Michael Mann & Kyle Wicker, North Kingstown

Backing with Compressor

- 1st - Neal Belliveau & Michael Ploulx, Portsmouth
- 2nd - Jeff Caswell & Chris Bellows, RIDOT Midstate
- 3rd - Kevin Goulet & Joe Silviera, RIDOT Portsmouth

Safety Quiz

- 1st - Rick Bateman & Ed Medeiros, RI Airport Corporation
- 2nd - Jeff Caswell & Chris Bellows, RIDOT Midstate
- 3rd - Kevin Goulet & Joe Silviera, RIDOT Portsmouth

Here are the results of the RI Backhoe Rhodoe (photos).

- 1st - Ken Laing, Westerly
- 2nd - Pete Russo, Narragansett
- 3rd - Neal Belliveau, Portsmouth



NATIONAL SNOW PLOW RHODEO

With a Gorgeous View

of the Colorado Mountains in the background, our winners of the Rhode Island Public Works Annual Snow Plow Rhodexo were able to represent R.I. and participate in the National Snow Plow Rhodexo as well as attend this years American Public Works Snow & Ice Conference. The R.I. Public Works Association sponsored Narragansett's winning team of Jason Teolis and Mike Nally who finished 18th out of 43 teams that competed. The national conference and rhodexo took place in Loveland, Colorado.

A few of the classes they participated in: The Impact of Sodium Chloride On Roadsides, Winter Elements given by Alaska's DOT Director and What Operators Expect Out of Their Managers.





*SALES * SERVICE * PARTS*

**ALTRUI BROS, FREIGHTLINER
TRUCK SALES, INC.**

1100 WARREN AVENUE
EAST PROVIDENCE, RI 02914
P 401-434-3540 F 401-438-0760

WWW.ALTRUIBROS.COM

SERVING RHODE ISLAND FOR OVER 45 YEARS

North American Equipment Upfitters, Inc.



Specializing in Aerial Equipment, Utility Bodies & CNG/Propane Conversions



6 Sutton Circle
Hooksett, NH 03106
Phone: 603-624-6288
Fax: 603-624-6289
www.naeuinc.com



In-House Fiberglass Repair

Full Service Engine Repair and Collision Repair

New Builds, Transfers, Repairs

NH State Inspections

Alternative Fuels Conversions



RIPWA TRANSPORTATION PICNIC



Thanks to Chuck and all for the great steaks and sandwich and the picnic on Sunday!! Hope we do it again next year and see some more iron in the lot. Thanks again,

Bob Dexter,
Scituate



Fall Training Sessions

Does Your Wood Chipper Have A Trailer Inspection Sticker?



All wood chipper trailers must be inspected in Rhode Island.

Below: Mike St Peter leads a pre-trip inspection on a Chipper during a Wood Chipper Skills & Safety Class



Diagnosing Auto Electrical Issues Workshop



Photo's courtesy of URI T2 Center

Nominations for the RIPWA Board of Directors are being accepted. Send your nominations to erin@ripwa.org

Positions are President, Vice-President, Secretary & Treasurer

The mission of the Rhode Island Public Works Association is to support high quality training and educational opportunities for the Public Works community in Rhode Island, to represent the interests of the Public Works community to the general public as well as federal, state and local government bodies and agencies and to provide a forum to public works employees for the exchange of ideas and technical information that is helpful to them in conducting their daily duties and responsibilities.



Stop using forecasts that don't help your budget or operations.

Precision Weather Forecasting (PWF) and our 30+ years of meteorological experience can help. Our weather forecasts and 24/7 on call support are made specifically for your DPW. Your forecast is issued by our local meteorologists up to 72 hours before the storm with regular updates through the day and night until the event is over.

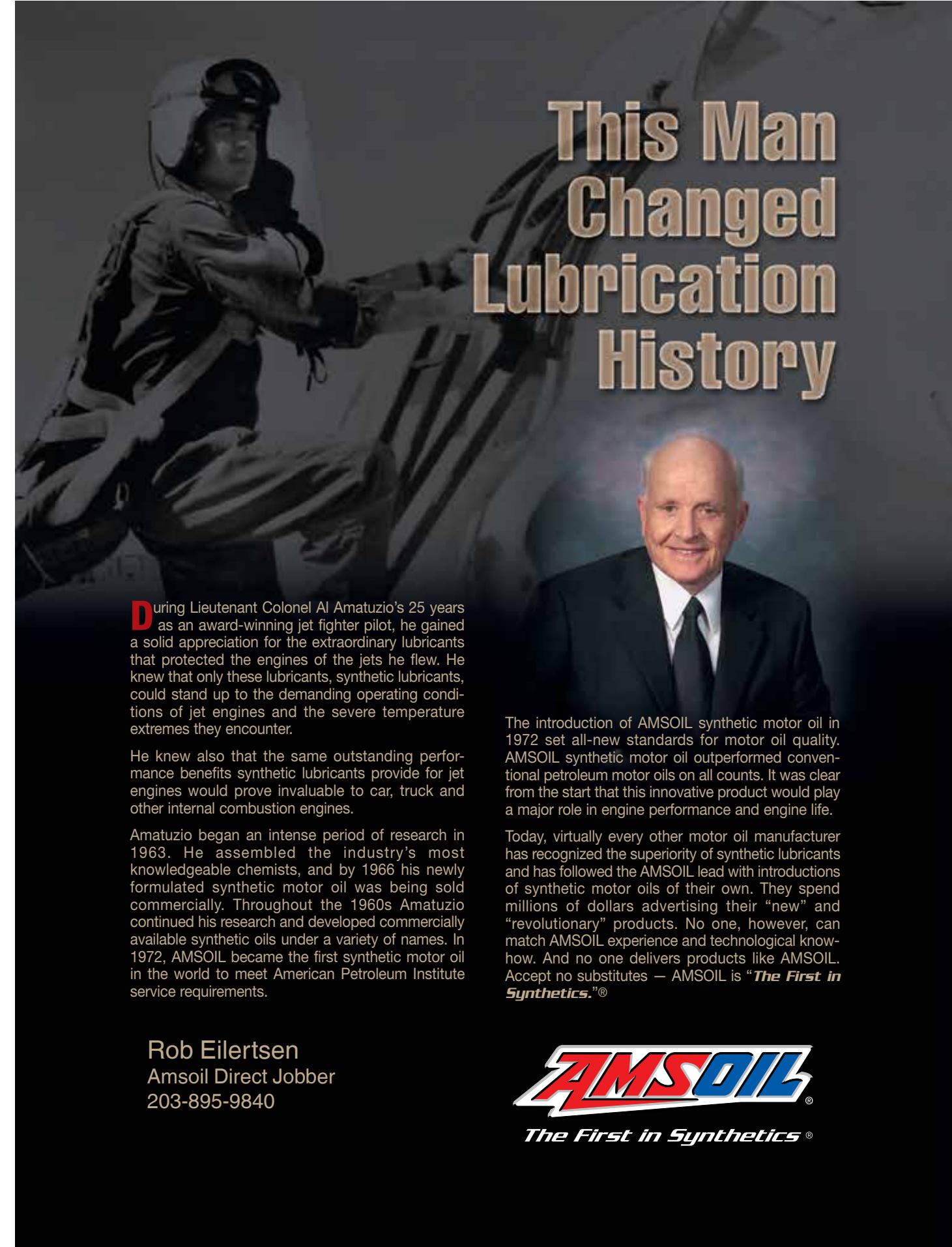
How Our Service Helps You:

- Know when to schedule staff in a timely fashion conserving your budget.
- Decide whether to treat vs. plow from detailed information such as a specific start time and when the first inch of snow will accumulate on YOUR ROADS.
- A forecast focused on your needs such as snowfall rates, how much and when snow/ice will accumulate on paved vs. non-paved surfaces, breaks or lulls, and times when icing is the greatest concern.
- Receive certified statements once the snow stops with town specific details of the event.
- Ability to call us 24/7 to discuss the weather and your actions with a local meteorologist.

For more information or to schedule a presentation call us
844-PWF-CALL

Visit us online
www.snowandice.com

Better Outcomes From Better Forecasts



This Man Changed Lubrication History

During Lieutenant Colonel Al Amatuzio's 25 years as an award-winning jet fighter pilot, he gained a solid appreciation for the extraordinary lubricants that protected the engines of the jets he flew. He knew that only these lubricants, synthetic lubricants, could stand up to the demanding operating conditions of jet engines and the severe temperature extremes they encounter.

He knew also that the same outstanding performance benefits synthetic lubricants provide for jet engines would prove invaluable to car, truck and other internal combustion engines.

Amatuzio began an intense period of research in 1963. He assembled the industry's most knowledgeable chemists, and by 1966 his newly formulated synthetic motor oil was being sold commercially. Throughout the 1960s Amatuzio continued his research and developed commercially available synthetic oils under a variety of names. In 1972, AMSOIL became the first synthetic motor oil in the world to meet American Petroleum Institute service requirements.

The introduction of AMSOIL synthetic motor oil in 1972 set all-new standards for motor oil quality. AMSOIL synthetic motor oil outperformed conventional petroleum motor oils on all counts. It was clear from the start that this innovative product would play a major role in engine performance and engine life.

Today, virtually every other motor oil manufacturer has recognized the superiority of synthetic lubricants and has followed the AMSOIL lead with introductions of synthetic motor oils of their own. They spend millions of dollars advertising their "new" and "revolutionary" products. No one, however, can match AMSOIL experience and technological know-how. And no one delivers products like AMSOIL. Accept no substitutes — AMSOIL is "*The First in Synthetics.*"[®]

Rob Eilertsen
Amsoil Direct Jobber
203-895-9840



The First in Synthetics[®]

THIS WINTER DON'T LET SNOW PLOW YOUR EQUIPMENT - GET SALT LICK DETERGENT

Winter is tough on your vehicles and equipment. Pair your pressure washer with Hotsy's best detergent for removing the salt, calcium chloride and de-icing solution used on winter roads. **Salt Lick** breaks down the crystalline structure of ice melt products and prevents them from re-crystallizing so they can be washed away. Talk to the experts at **Hyland Equipment** to find out how to beat winter to the punch.

Available in 5 and 55 gallon drums.

20% OFF YOUR FIRST PURCHASE of SALT LICK


HOT DEALS ON PARTS

 **\$89**
50' HIGH PRESSURE HOSE

 **\$77**
ADJUSTABLE FOAMER WITH TANK

 **\$215**
PIVOT HOSE REEL

 **\$35**
TRIGGER GUNS

 **TAKE CARE OF YOUR MACHINE AND IT WILL TAKE CARE OF YOU**
Make sure your pressure washer is always ready for the toughest jobs. Ask us about a maintenance plan or one of our 24-point tune-ups.


 **HYLAND**
EQUIPMENT COMPANY

5800 POST ROAD
E. GREENWICH, RI 02818
401.398.0100
HYLANDEQ.COM

Industrial Oil
& Supply Company, Inc.

20% DISCOUNT FOR RIPWA MEMBERS
ON ALL WIX FILTERS

Availability breeds success...

 BRING OR MENTION THIS AD AT TIME OF ORDER

One Day Only

SATURDAY, NOVEMBER 15, 2014

8:00AM-11:30AM

CASH OR CHECK ONLY - NO CREDIT/DEBIT CARD ACCEPTED

INDUSTRIAL OIL & SUPPLY CO, INC
308 EAST SCHOOL STREET WOONSOCKET, RI
401.769.4956



We Put Safety First

www.RIPWA.org

18th Annual RIPWA Indoor Expo

Registration is also available on our website: www.ripwa.org

Wednesday, February 4, 2015

Snow Date: February 11

9:00 AM - 3:00 PM

Wright's Farm Restaurant, Burrillville, RI

Main Event to be held in the Carriage Room

- ◆ Displays are 8' x 10' and include an 8' draped table and chairs. Electrical outlets are available. Cost of each display is \$400, which includes up to five meal tickets.
- ◆ Coffee and donuts will be provided in the morning, and Wright's Farm's famous Family-Style-Dinner will be served for lunch
- ◆ Raffle will be held at 1:00 PM
Please participate by donating a prize
- ◆ Please be sure to bring your tickets as we will be collecting them at the door



Registration:

Your space is reserved once payment is received.

Company: _____ Contact: _____

Email: _____ Phone: _____

Address: _____

City: _____ State: _____ Zip: _____

Space Choice: _____, _____, _____ Is display over 7' tall? _____ Need electricity? _____

of Exhibit Spaces (\$400 each) _____ # of Meal Tickets (up to 5) _____

of Extra Meal Tickets (\$20. each) _____ 2015 RIPWA Dues (\$80.) _____

Total Enclosed: _____

**Mail registration and check to:
Indoor Expo
78 Burnt Hill Rd,
Hope, RI 02831**

Credit cards and registration also accepted on our website for an additional charge to cover bank fees.

www.RIPWA.org

**Questions? Contact Jeff
Cathcart at 401-368-4850 or
jcjc@cox.net**



We Put Safety First

www.RIPWA.org

18th Annual RIPWA Indoor Expo

Vendor registration is available on our website: www.ripwa.org

Wednesday, February 4, 2015

Snow Date: February 11

9:00 AM - 3:00 PM

Wright's Farm Restaurant, Burrillville, RI

Tickets will be collected at the door

(For tickets visit www.ripwa.com)

Main Event to be held in the Carriage Room

◆ Seminars will take place between 10:00am & noon. If there is a particular seminar you would like to see or if you are interested in being a presenter contact Jeff Cathcart, jccl@cox.net or 401-368-4850

◆ Coffee and donuts will be provided in the morning and Wright's Farm's famous Family-Style-Dinner will be served at noon. Don't forget your tickets! (They will be used as your meal ticket).

◆ Raffle will be held at 1:00 PM.

◆ Please be sure to bring your ticket and a can of food as we will be collecting for our annual Rhode Island food bank drive.

◆ Special municipal raffle prizes to be awarded throughout the day.

◆ For vendor registration please visit: www.ripwa.org



Questions? Please contact Jeff Cathcart at 401-368-4850 or jccl@cox.net